


Connect Remotely Via VPN

This guide is written to assist anyone who needs to connect to the ISU VPN for whatever reason. In order to use the NX client on any of the Xilinx-[1-3], Jones-[1-3], and many other computers located on campus, you have to be connected to the VPN.




Step 1






The first step is to download the NX client. Visit <http://www.nomachine.com/download.php> and download the version that is suitable for your machine. After you have it downloaded, run the installation.




NX 3.5.0 Download




 Due to the extremely wide range of Linux distributions supported by NX, NoMachine's policy is to give priority to the most recent versions first. At the time of a new NX release, it is possible that packages for older Linux distributions are slightly delayed. Linux users that can't find their preferred distribution listed in this page, will be able to download the appropriate NX packages from this alternate location:
<http://www.nomachine.com/download-earlier-linux.php>




More information about how to retrieve the right packages for your Linux distribution can be found [here](#).

| NX Free Edition | | |
|--|-------------------------------|---|
|  | ▶ NX Free Edition for Linux |  |
| | ▶ NX Free Edition for Solaris |  |

| NX Client Products | | |
|---|-------------------------|---|
|  | ▶ NX Client for Windows |  |
| | ▶ NX Client for Linux |  |
| | ▶ NX Client for Mac OSX |  |
| | ▶ NX Client for Solaris |  |

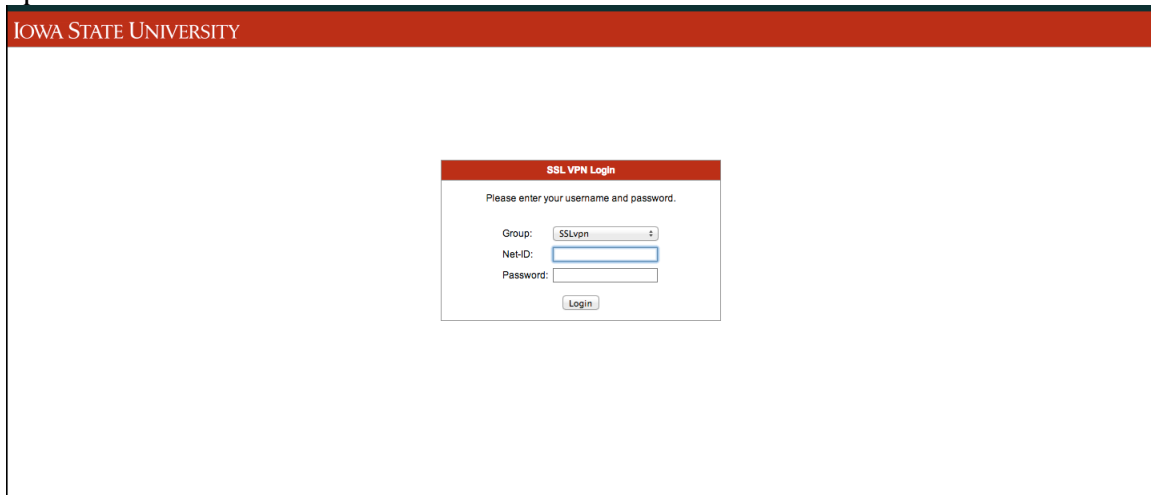
| NX Server Products | | |
|---|------------------------------------|---|
|  | ▶ NX Server for Linux Evaluation |  |
| | ▶ NX Server for Solaris Evaluation |  |

| NX Server Manager | | |
|---|---------------------------------|---|
|  | ▶ NX Server Manager for Linux |  |
| | ▶ NX Server Manager for Solaris |  |

| NX Web Companion | | |
|---|--------------------------------|---|
|  | ▶ NX Web Companion for Linux |  |
| | ▶ NX Web Companion for Solaris |  |

Step 2

Setup the VPN. There are several ways to do this. Either way, start by visiting vpn.iastate.edu.

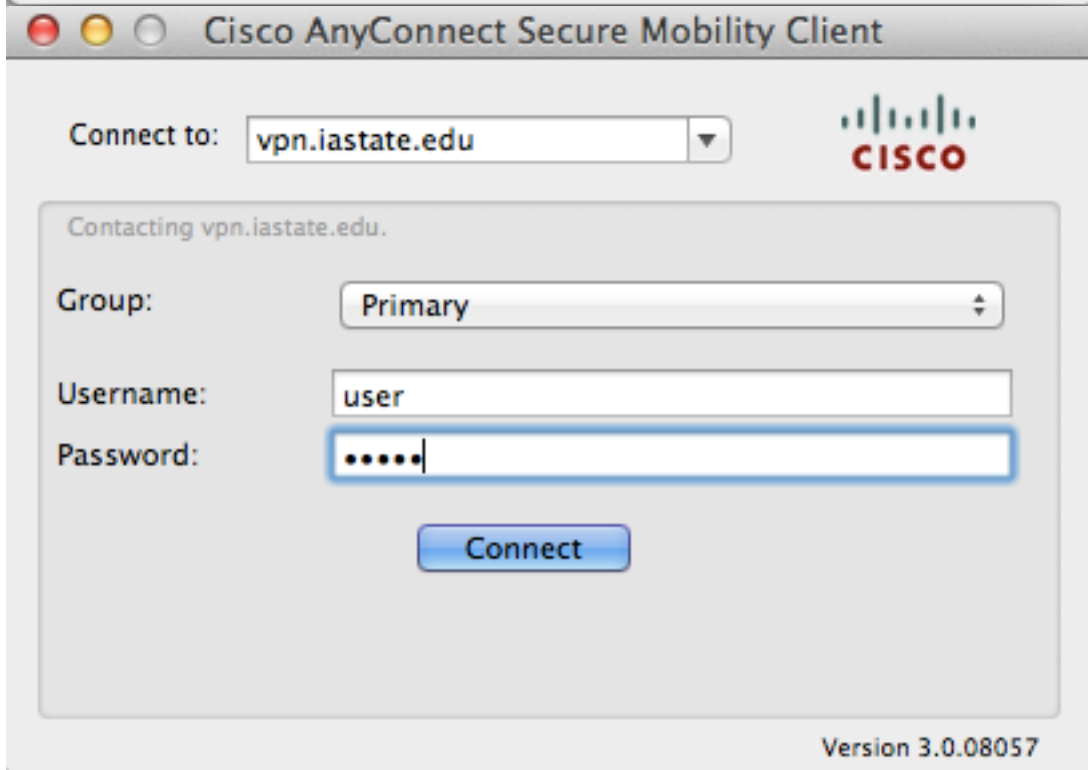
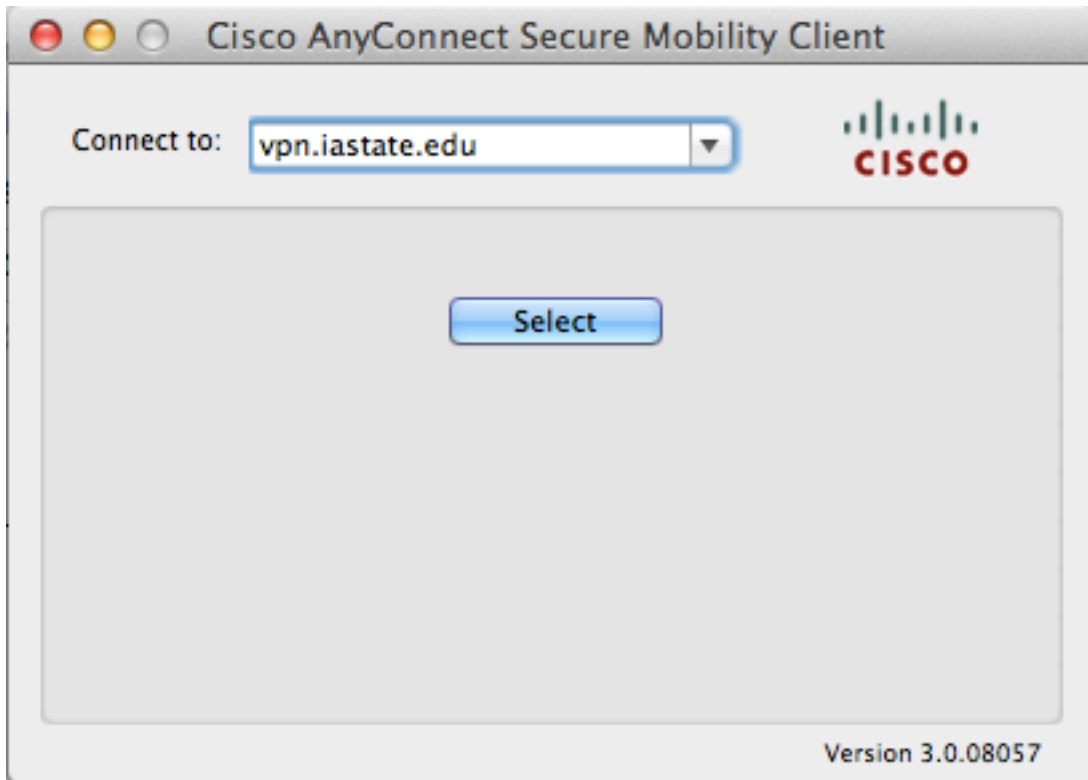


After you log in, the system will give you a few options. On Windows and mac, you can either install the cisco VPN client software, or authenticate with the web browser. If you are using Linux, you will have to install VPN client.

If you choose to install the client, download and install the client now.

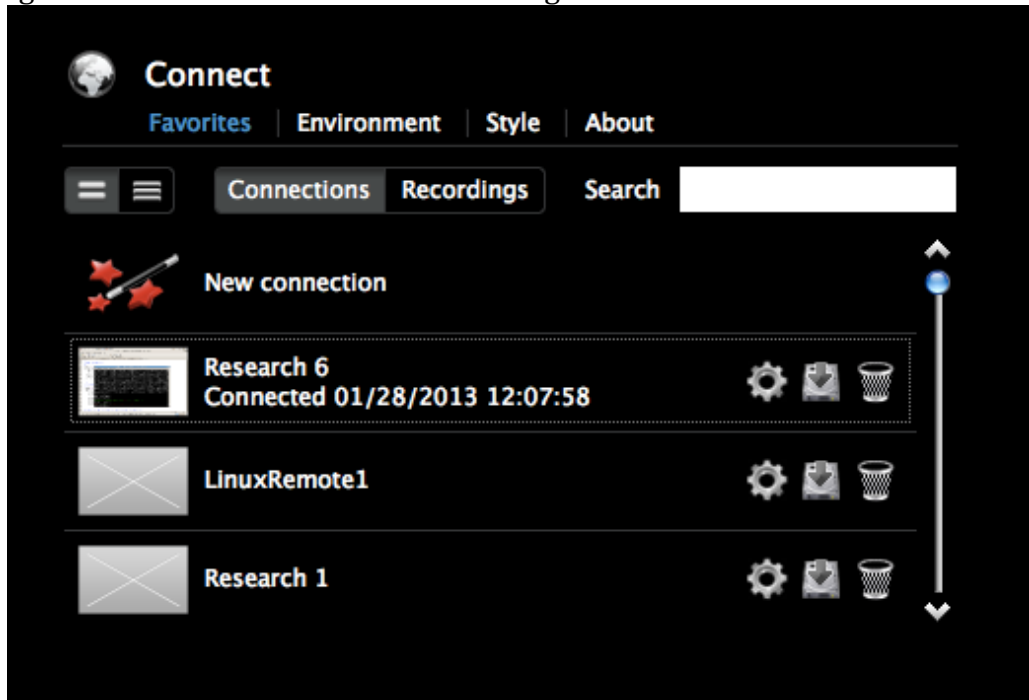


If you installed the VPN client, now connect to the VPN with it.

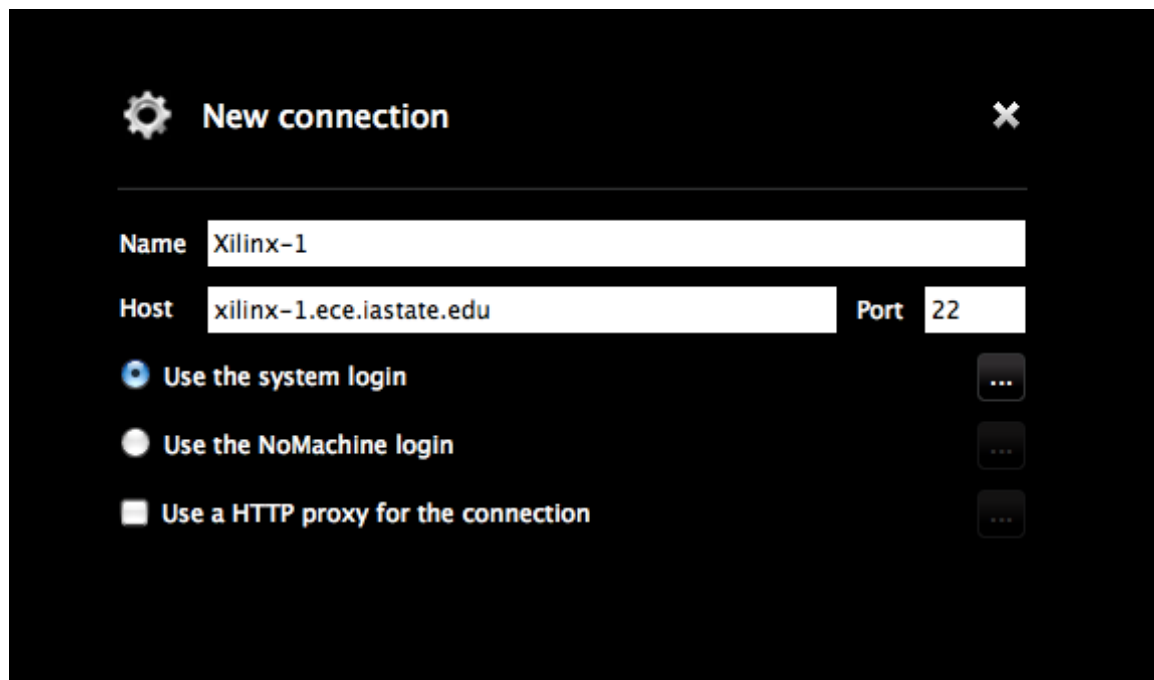


Step 3

Configure the NX client to connect to the target remote host.



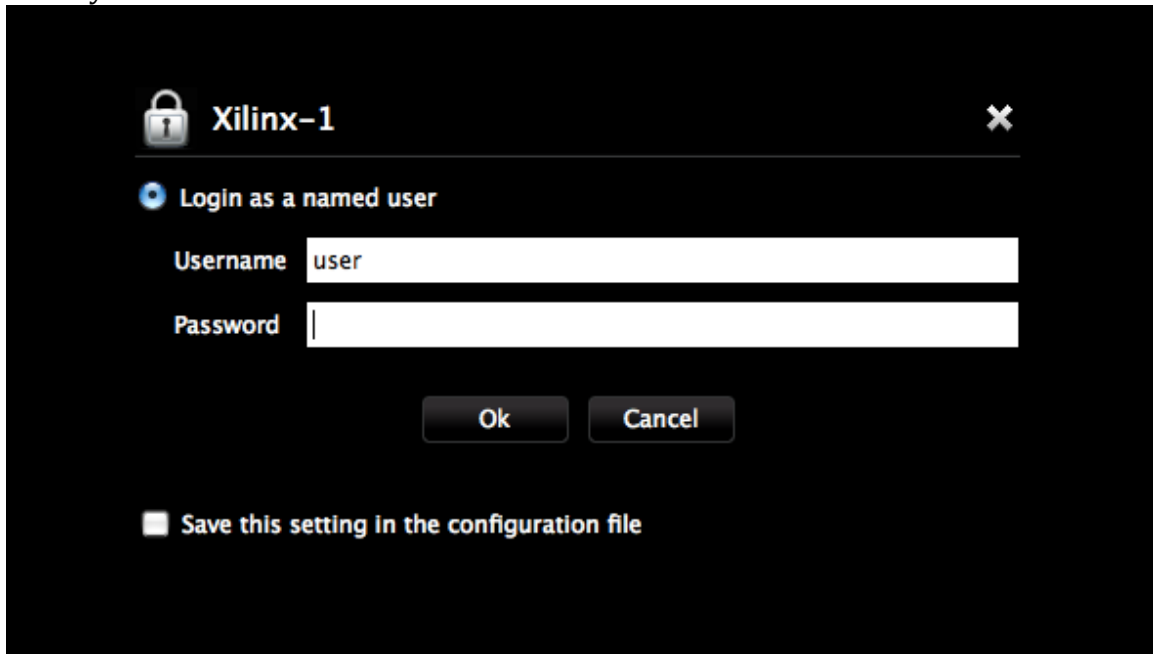
Choose new connection



Enter the remote host details. In the figure above the host is Xilinx-1.ece.iastate.edu, and the connection will be saved as Xilinx-1.

After this has been configured, choose to connect to the Xilinx-1 saved connection.

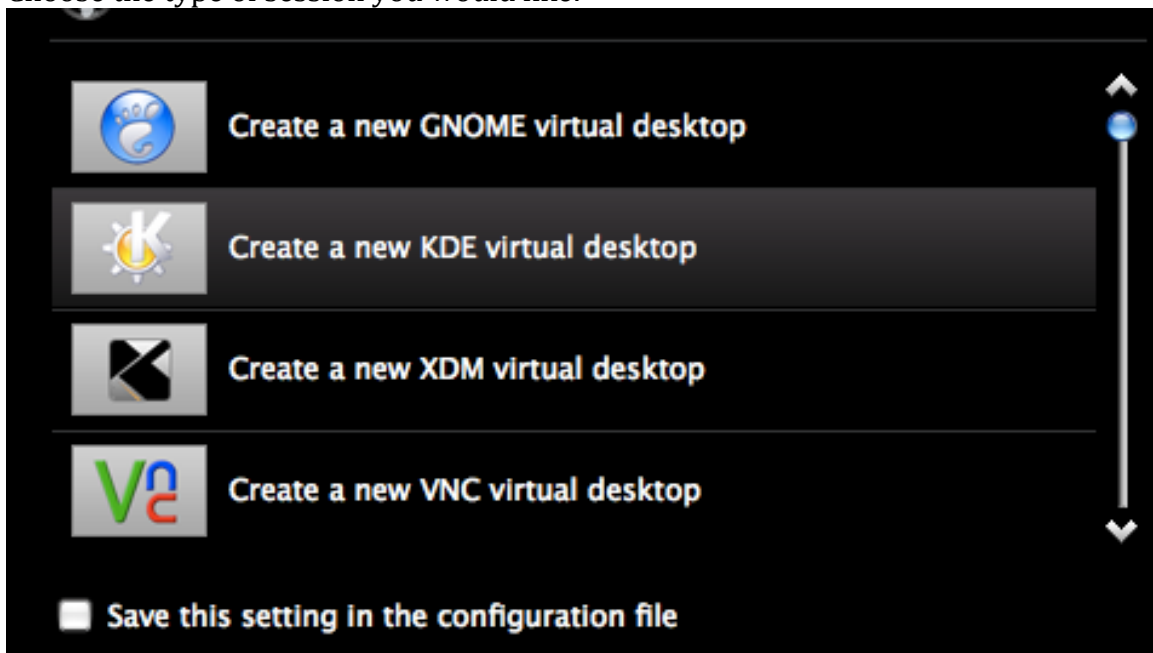
Enter your ISU credentials



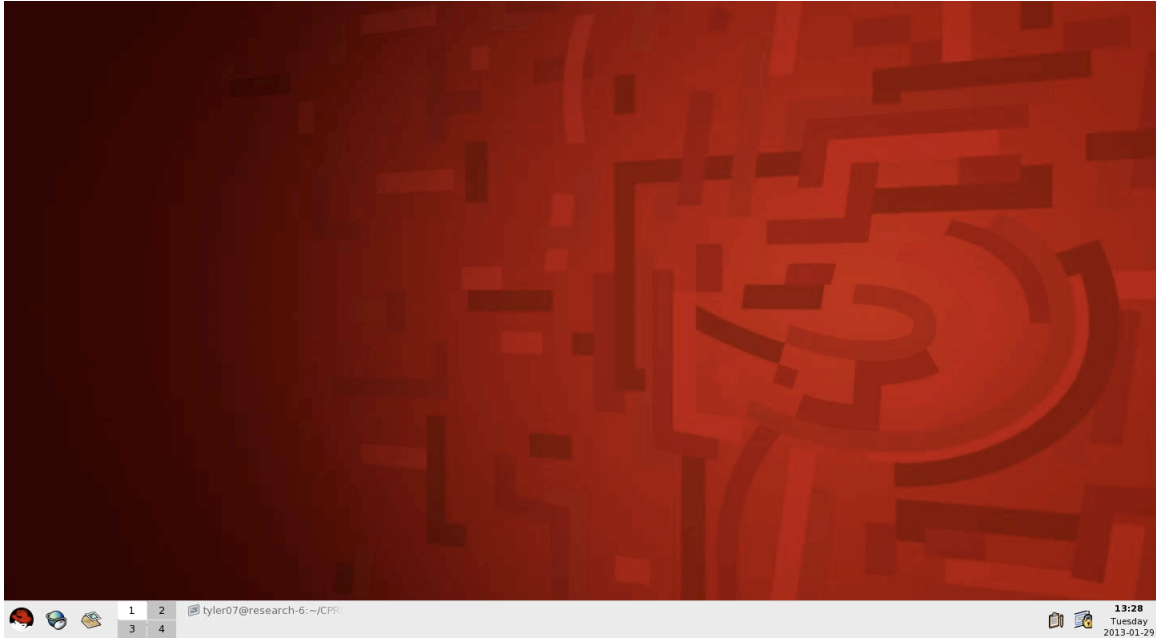
A login dialog box titled "Xilinx-1" with a close button (X) in the top right corner. It features a lock icon on the left. The dialog is set to "Login as a named user". There are two input fields: "Username" containing the text "user" and "Password" which is empty. Below the fields are "Ok" and "Cancel" buttons. At the bottom, there is a checkbox labeled "Save this setting in the configuration file" which is currently unchecked.

Click okay.

Choose the type of session you would like:



A dialog box for selecting a virtual desktop session. It has a scrollable list of four options, each with an icon and text: "Create a new GNOME virtual desktop" (GNOME icon), "Create a new KDE virtual desktop" (KDE icon), "Create a new XDM virtual desktop" (XDM icon), and "Create a new VNC virtual desktop" (VNC icon). The "KDE" option is currently selected and highlighted. At the bottom, there is a checkbox labeled "Save this setting in the configuration file" which is currently unchecked.



You will then be presented with the desktop. From here you can use the session just like any other computer.